

Supporting and Sustaining Our Crew:

GCCS Reopening
Plans
for In-Person
and Virtual
Instruction



Please Note:

The Genesee Community Charter School staff is aware that the most important component of a successful school year is safety. In order to ensure the safety of the school community, the 2020-2021 school year will likely move between multiple scenarios as the community responds to the regional, city, and campus infection rates. However, with instability of moving between in-person and remote instruction, the school will also focus on building positive relationships and creating a predictable and sustainable plan as possible so that the year feels equitable and welcome to the entire community.



GCCS Reopening Task Force (Responsible Parties)

Health and Safety	Operations	Curriculum and Instruction
<p data-bbox="73 456 540 539">Shannon Hillman, School Leader</p> <p data-bbox="73 648 540 849">Sarah Miner, Parent, Nurse Liz Loomis, Parent, Doctor Sarah Johnson, Parent, PE Teacher Lauren Grimm, Social Worker</p>	<p data-bbox="620 456 1025 591">Maureen Milke, Coordinator of School Operations</p> <p data-bbox="620 648 935 725">Theresa Fitzpatrick, Teaching Assistant</p>	<p data-bbox="1105 456 1572 539">Lisa O'Malley, Curriculum Coordinator</p> <p data-bbox="1105 648 1642 1019">Keri Gonzalez, Classroom Teacher Jean Hurst, Teacher on Special Assignment E'Shantee Manley, Parent, RCSD Teacher Stacey Cicero, Transition Coach, Former Classroom Teacher Kyrra Branch, Parent, Family Association Officer</p>



This was a bit of a messy process...

We started with community data and resources...

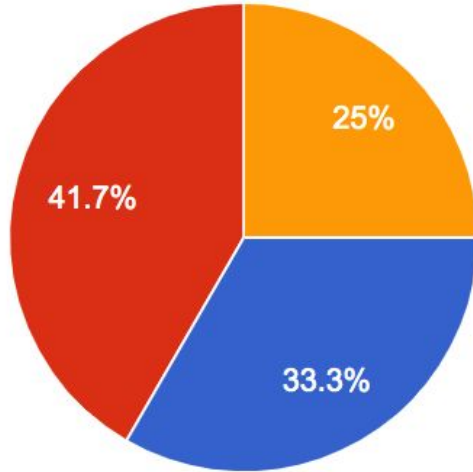
- Surveys, Focus Groups, Experts, Other Schools
- Considerations:
 - Preferences
 - Comfortability
 - Accessibility/Equity



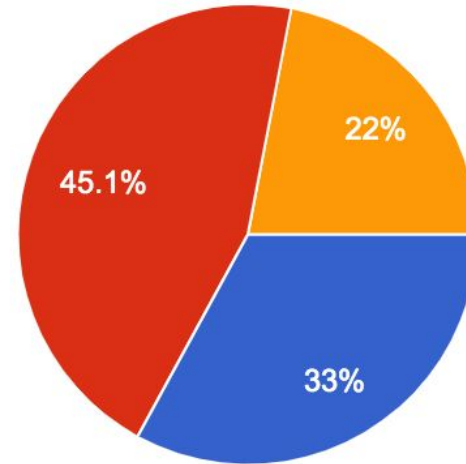


- All in-person learning
- A hybrid of in-person and distance learning
- All distance learning

Staff Preference



Family Preference

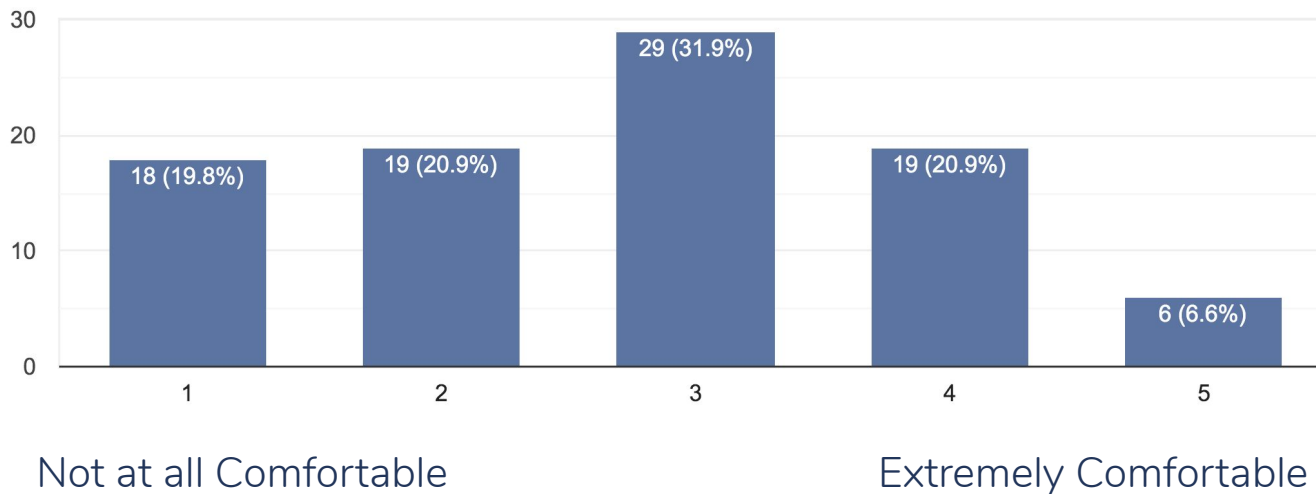


Over 75% prefer some form of in-person instruction



If in-person learning resumes in the fall, how comfortable are you in having your child(ren) return to the school building?

91 responses



Families are mixed about returning to the building.

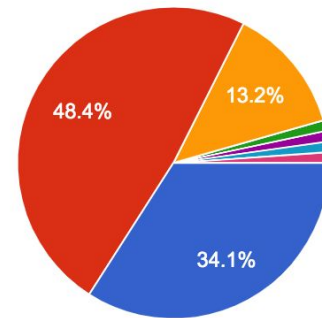
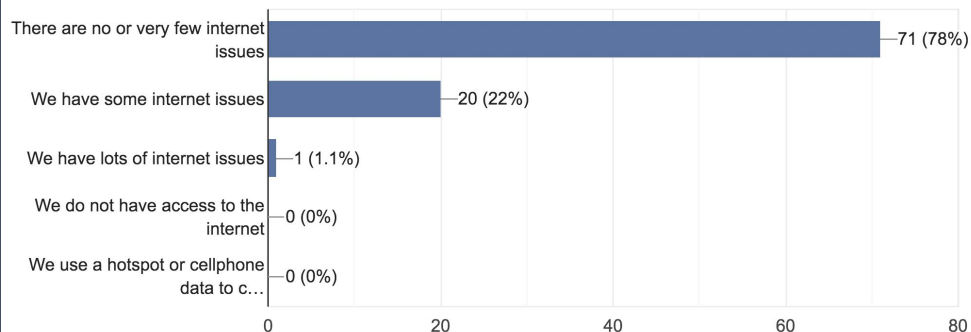


Accessibility

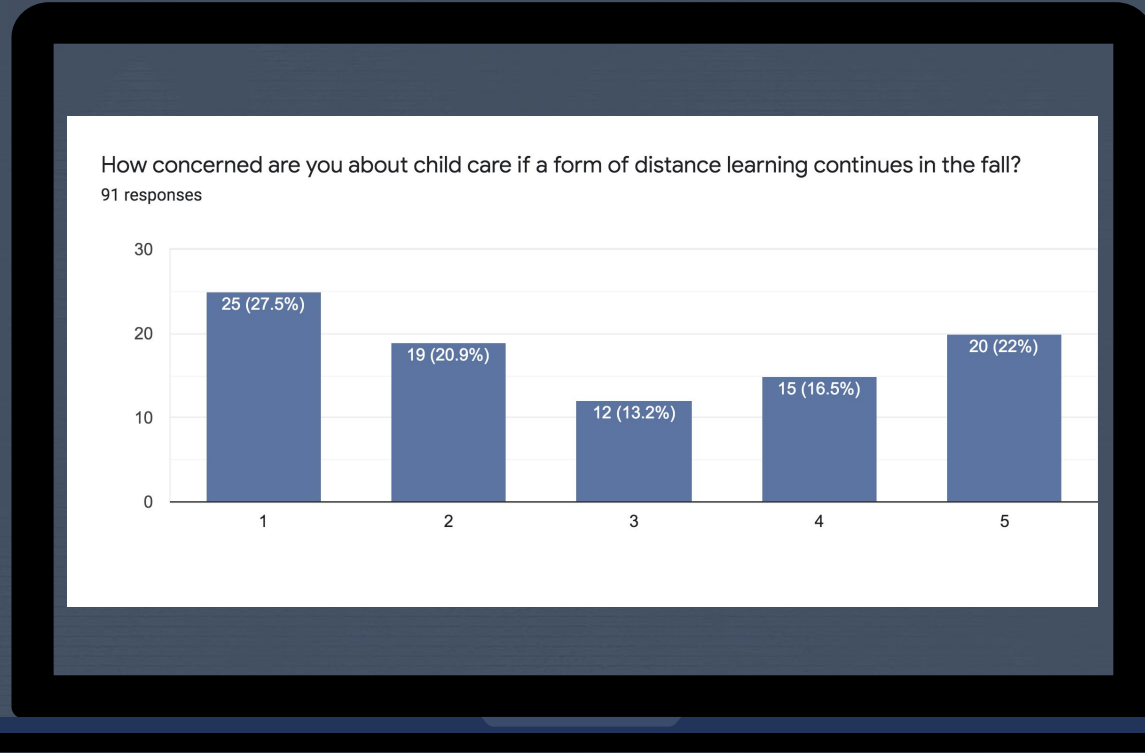
78% had little to no internet issues

Please check the statements that describe your current household internet connectivity.

91 responses



48% were sharing devices.



Families are mixed about child care with distance learning.

Three Scenarios for Reopening

Scenario 1: In-Person Instruction

All students and staff in the building
M, T, W, Th, F

- ½ class cohorts working parallel across two classrooms/spaces

Scenario 2: Hybrid Instruction

50% student capacity with all staff in the building
M, T, Th, F

- All Virtual on W
- ½ class cohorts in-person and virtual with asynchronous instruction

Scenario 3: Virtual Instruction

All students and staff learning/teaching remotely

M, T, W, Th, F

- Combination of live and recorded instruction



Noteworthy:

- ✗ Children with an IEP or qualify for ELL services are allowed to attend any day “in-person” instruction is offered
- ✗ Families have the right to “opt in” to Virtual Instruction all five days
- ✗ Meals need to be provided whether children are participating virtually or in-person



Fall Expedition (September - Thanksgiving Break)	Winter Expedition (December - Spring Break)	Spring Expedition (April - End of School Year)
Scenario 2: Hybrid Instruction for grades K-6	Scenario 2: Hybrid Instruction for grades K-6 OR Scenario 3: Virtual Instruction for grades K-6	Scenario 2: Hybrid Instruction for grades K-6 OR Scenario 1: In-Person Instruction for grades K-6

WHY Hybrid Instruction in the Fall?

- Ease into the year with opportunities for virtual training
- Cohort model allows for more personalized instruction with more staff attention
- In-person diagnostic assessments
- Relationship building to set the stage for successful virtual learning if needed.





GCCS is Prepared for In-Person Instruction

Strategies for

COVID-19 Prevention

I am Ready For Learning!

MY HEAD IS READY



MY HEART IS READY



MY HANDS ARE READY



Strategies and Prevention

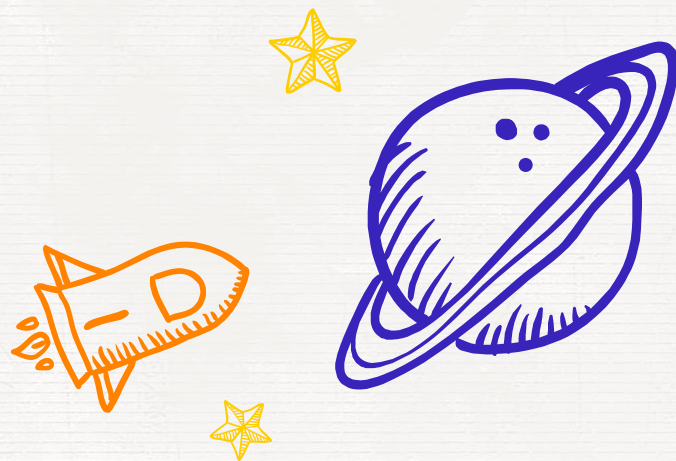
- Symptom monitoring
- Daily screening questions and temperature taking for staff and other building visitors
- Daily temperature taking for students
- Weekly screening questions for families
- Social distancing (adjusted arrival and dismissal procedures, utilizing outdoor spaces and larger areas for PE, Music, and classroom breakout space)
- Relocating the Health Office and identifying a COVID-19 isolation area



Strategies and Prevention

- Allowing limited or no access to the building for visitors, guests, special education service providers, and vendors
- Require face coverings (masks) for all who are in the building (students, staff, visitors, campus personnel)
- Social and academic gatherings will be virtual
- Cohorting (on buses and in classrooms) while keeping siblings together in the same cohort
- Documentation systems to support contact tracing
- Frequent cleaning and disinfection
- Hand and respiratory care and training
- Frequent and accessible communication with the community
- Using open doors and windows to promote airflow
- Frequent cleaning of the HVAC filtration systems





F.A.Q.s



Frequently Asked Questions

- ✗ When is our first day of school?
 - September 2nd, 2020
- ✗ Is GCCS following the 2020-2021 Calendar?
 - Yes, a modified, “cohort calendar” will be forthcoming!
- ✗ Will my child get a laptop or hotspot?
 - All students should expect to receive a chromebook from school. Hotspots are available upon request.
- ✗ Will GCCS provide masks?
 - GCCS has child-sized cloth masks available if needed, but families should provide masks for students.
- ✗ How will GCCS communicate next steps?
 - The School will be sending information to families via email.



Remember...things can and **WILL** change,
but we will get through this together.

